



Artists impression only

*Building Quality Homes for Gladstone...*

# Orchid- 118m<sup>2</sup>

HIP ROOF STYLE

## HOUSE FEATURES

- 2 LARGE BEDROOMS
- LARGE ENSUITE
- LARGE WALK IN ROBE
- CUSTOM MADE KITCHEN
- WALK IN PANTRY
- LINEN STORAGE
- SLIDING ROBE DOORS
- SINGLE LOCKUP GARAGE

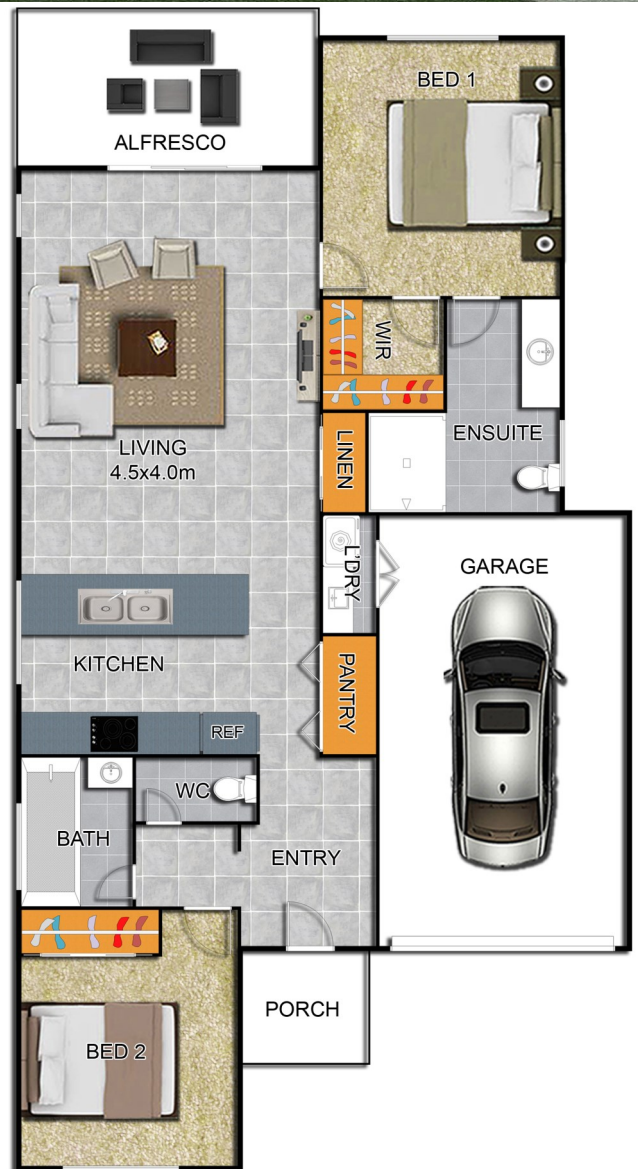
## HOUSE & LAND PACKAGES AVAILABLE

Ph 07 4978 7335 email : [office@tenhomes.com.au](mailto:office@tenhomes.com.au)  
 Visit our office for information on building your next dream home....  
 7c Helen St, Callemondah Gladstone  
[www.tenheggelerhomes.com.au](http://www.tenheggelerhomes.com.au)  
 QBCC-1024727

**VISIT OUR DISPLAY HOME**

See website for address details  
[www.tenheggelerhomes.com.au](http://www.tenheggelerhomes.com.au)

WIDTH x DEPTH  
 8600x 15400



TENHEGgeler BUILDING COMPANY PTY LTD TRADING AS

# TENHEGgeler HOMES



*Elegance  
Style  
Quality*

Copyright of this plan belongs to Tenheggeler Homes\*. Prices & Inclusions subject to change at anytime without notice.