



Paradise 180m²

WIDTH x DEPTH
11300 X 24830

HOUSE FEATURES

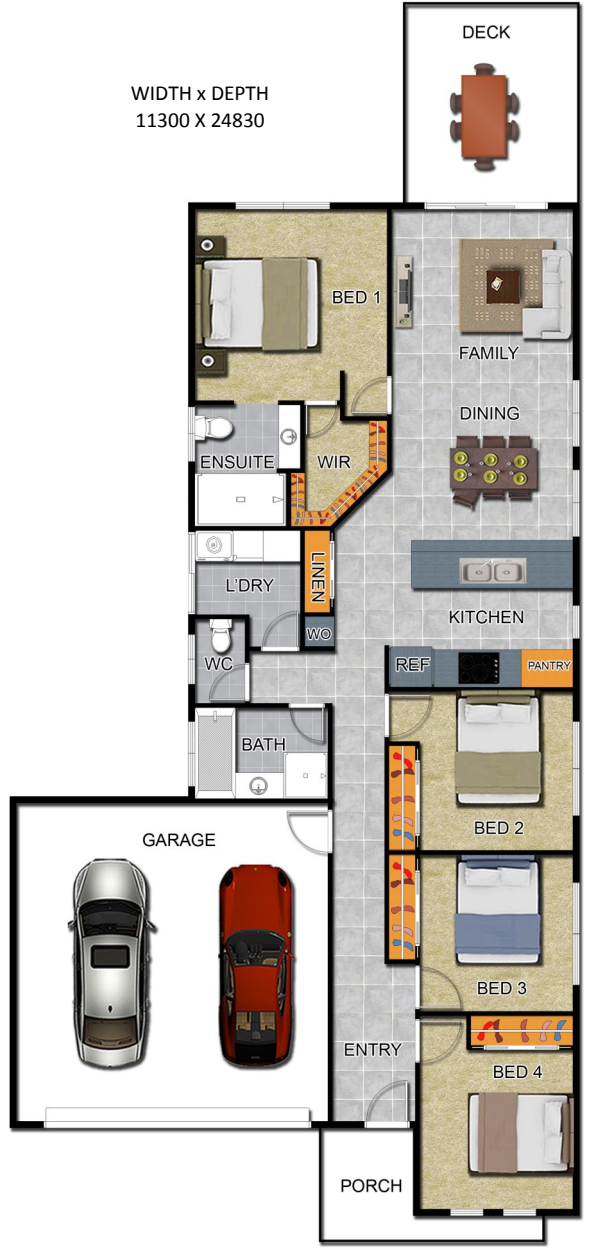
- 4 BEDROOMS
- LARGE WALK IN ROBE
- DESIGNER KITCHEN
- POWDER ROOM
- RENDERED FEATURES
- WEATHERBOARD
- FACADE FEATURES
- INTERNAL LAUNDRY
- DOUBLE LOCK UP
- GARAGE

**HOUSE & LAND
PACKAGES AVAILABLE**

Ph 07 4978 7335 email office@tenhomes.com.au
 Visit our office for information on building your next dream home...
 7c Helen St, Callemondah Gladstone
www.tenheggelerhomes.com.au
 QBCC-1024727

VISIT OUR DISPLAY HOME

See website for address details
www.tenheggelerhomes.com.au



TENHEGgeler BUILDING COMPANY PTY LTD TRADING AS

TENHEGgeler HOMES



*Elegance
Style
Quality*

Copyright of this plan belongs to Tenheggeler Homes*.
Prices & Inclusions subject to change at anytime without notice.