



*Building Quality Homes for Gladstone...*

Artists impression only

# Orchid- 169m<sup>2</sup>

GABLE ROOF STYLE

## INCLUSION

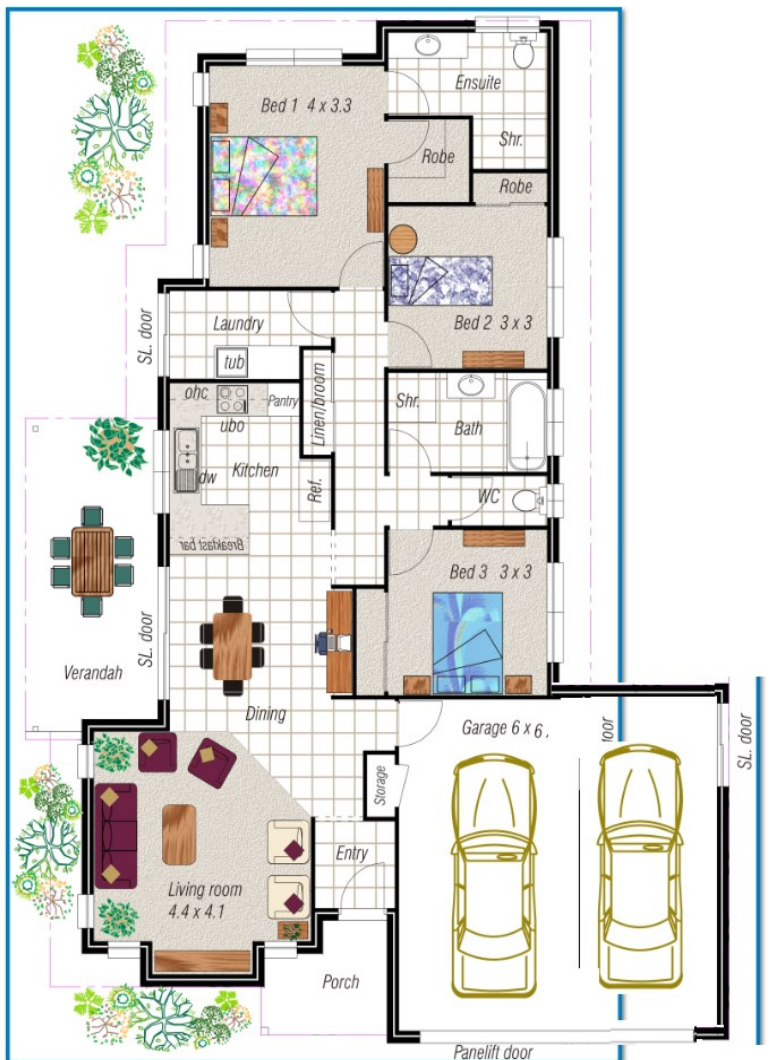
- AGG DRIVEWAY & TURF\*
- FENCING & GARDEN\*
- LETTERBOX & CLOTHESLINE
- SECURITY SCREENS
- AIRCONDITIONING
- STONE BENCHTOPS
- STAINLESS STEEL APPLIANCE PACKAGE
- OPEN PLAN LIVING

## HOUSE FEATURES

- 3 LARGE BEDROOMS
- LARGE ENSUITE
- LARGE WALK IN ROBE
- CUSTOM MADE KITCHEN
- WALK IN PANTRY
- LINEN STORAGE
- SLIDING ROBE DOORS
- TILE\* FACADE FEATURES
- EXPOSED AGG DRIVEWAY

## HOUSE & LAND PACKAGES AVAILABLE

Ph 07 4978 7335 email : [tenhomes@outlook.com](mailto:tenhomes@outlook.com)  
 Visit our office for information on building your next dream home....  
 7c Helen St, Callemondah Gladstone  
[www.tenheggelerhomes.com.au](http://www.tenheggelerhomes.com.au)



VISIT OUR DISPLAY HOME OPEN AT:

54 CREEKVIEW DRIVE FOREST SPRINGS

WIDTH x DEPTH  
 13420 x 18500  
 Inclusive of eaves

TENHEGgeler BUILDING COMPANY PTY LTD TRADING AS

# TENHEGgeler HOMES



*Elegance  
 Style  
 Quality*

Copyright of this plan belongs to Tenheggeler Homes\*. Prices & Inclusions subject to change at anytime without notice. \*Inclusions match the designer inclusions list.